

ENGINE POWERED ARTICULATING BOOM LIFTS

AB15J (AB480J)

Compliant with CE/AS/EAC standards

PRODUCT HIGHLIGHTS

Suitable for Narrow Spaces

- Narrow width with zero tail sweep

Operating Efficiency

- The working platform can be lifted and lowered to any position without need to operate the secondary arm

Reliable

- The simple linkage mechanism design and hydraulic leveling are reliable during operation

Precision Performance

- 3 joysticks with variable proportional control, accuracy in reaching the operation target



Standard features		
Oscillating function	7-in display screen	4WD × 2WS
Proportional control with 3 joysticks	Automotive-grade sleeves for all pipes	Weighing system
Hydraulic platform leveling	AC power to platform	Emergency stop system
Tilt protection system	Max tilt rating to 5°	Emergency lowering system
Flashing beacon	Horn & buzzer	Fault diagnosis system
Footswitch	1.83m(6') platform with swinging gate	Secondary guarding device
Foam-filled tires	Manual storage box	Telematics-ready connector
Options & Accessories		
Foam-filled non-marking tires	Solid tires/Solid non-marking tires	1.45m (4'9") platform
Platform work light	Half mesh (For platform with swinging gate)	Overhead anti-collision device
Glazier kit(For platform with swinging gate)		

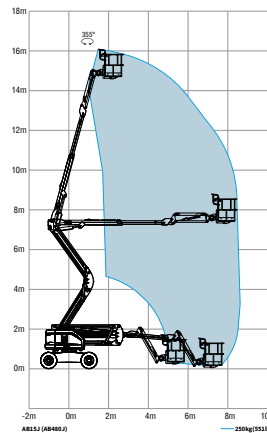
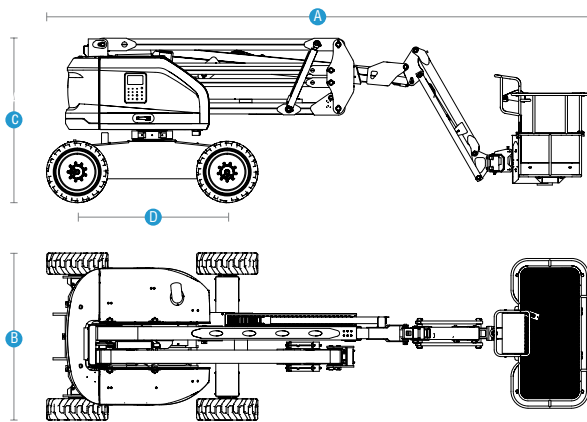


ENGINE POWERED ARTICULATING BOOM LIFTS

AB15J (AB480J)

Compliant with CE/AS/EAC standards

Model	AB15J (AB480J)
Dimensions	
Max Platform Height	14.7 m (48'3")
Max Working Height	16.7 m (54'9")
Max Horizontal Reach	8.5 m (27'11")
Max Up and Over Clearance	7.2 m (23'7")
A Stowed Length	7.35 m (24'1")
B Stowed Width	2.26 m (7'5")
C Stowed Height	2.22 m (7'3")
Stowed Length (Transport)	7.35 m (24'1")
Stowed Width (Transport)	2.26 m (7'5")
Stowed Height (Transport)	2.22 m (7'3")
D Wheelbase	2.03 m (6'8")
Ground Clearance	0.32 m (1'1")
Platform Size (L×W×H)	1.83 × 0.85 × 1.1 m (6'×2'9"×3'7")
Performance	
Max Platform Capacity	250 kg (551lbs)
Max Platform Occupants	2 persons
Drive Speed (Stowed)	5 km/h (3.1 mph) 4 WD, 7 km/h (4.4 mph) 2 WD
Drive Speed (Raised)	1.1 km/h (0.7 mph)
Gradeability	30% (2 WD)/40% (4 WD)
Turntable Rotation	355° /Non-continuous
Platform Rotation	160°
Tilt Rating	5°
Turning Radius (Inside/Outside)	1.8 m/4.5 m (5'11"/14'9")
Turntable Tail-Swing	0 m (0")
Max Allowable Side Force	400 N (90 lbf)
Max Allowable Wind Speed	12.5 m/s (28 mph)
Tire Spec/Type	315/55D20 (Foam-filled)
Power	
Drive × Steer	4WD×2WS
Engine	36.3 kW/2800 rpm/D2011L31/Deutz/EU Stage 3A/EPA Tier 3 35.5 kW/3000rpm/4TNV88C-DFLT/Yanmar/EU Stage V/EPA Tier 4F
Hydraulic Tank Capacity	90 L (19.8 gal (UK)/23.8 gal (US))
Diesel Tank Capacity	70 L (15.4 gal (UK)/18.5 gal (US))
System Voltage	12 VDC
Weight	
Weight	7,080 kg (15,609 lbs) 2WD / 7,280 kg (16,050 lbs) 4WD
Standards Compliance	CE/AS/EAC



We reserve the right to make specification. The above represents the current specifications at time of publications. 9. 2025



HONEST, RELIABLE & REACTIVE
SOLUTIONS FOR WORKING AT HEIGHT



CONTACT US

- ☎ 0800 865 4455
- ✉ info@hiresafe.com
- 🌐 www.hiresafe.com

