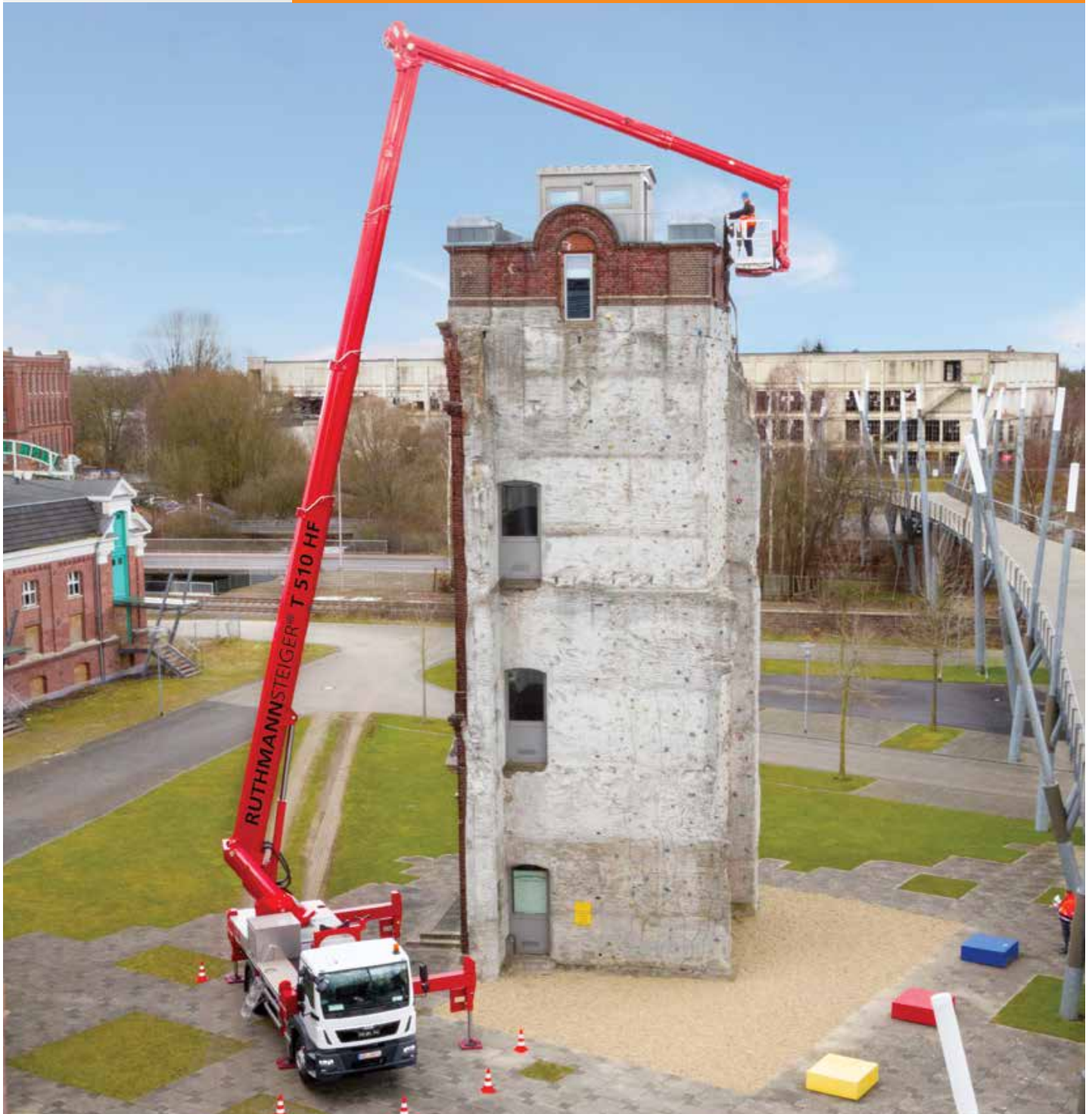


STEIGER® T 510 HF



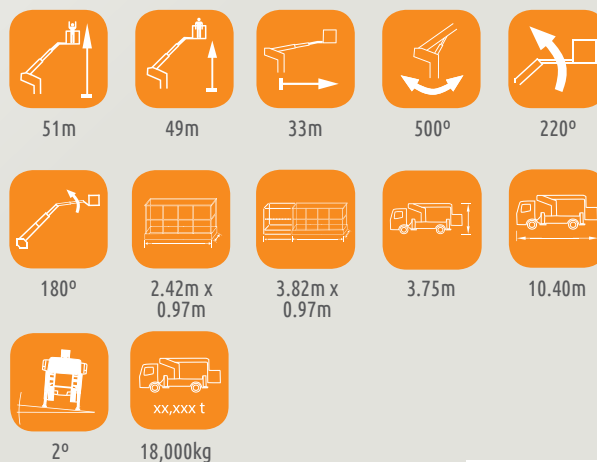
STEIGER® T 510 HF



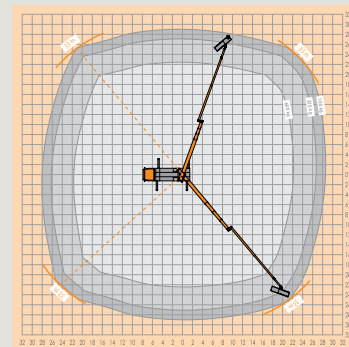
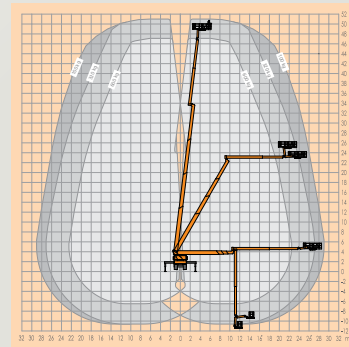
FEATURES

- 51m working height
- 33m outreach
- 10.40m total vehicle length (depends on vehicle type)
- Top performance data due to multi-bevelled boom technology
- Standing' working basket perfect for 'under and up' as well as all possibilities of 'up and over and back' during lowered RÜSSEL®
- Generous 600kg working cage load capacity
- Working below ground possible
- Automatic set-up/retraction mechanism at the push of a button
- Aluminium working cage can be extended hydraulically
- Maintenance-friendly boom system
- Revolutionary 2 axle chassis in 18 tonne class

RUTHMANN's highly successful HEIGHT performance-STEIGER®. The revolutionary, world champion performance specifications are what make this STEIGER® model so special - 51m working height combined with 33m outreach, which - coupled with a 2-axle chassis - can be found nowhere else on the working platform market. Such performance data were previously possible only on a 3-axle chassis.



working height **51m**
maximum outreach **33m**
platform capacity **600kg**



Extended boom



Extended jib



Roomy working cage



MULTIFUNCTIONAL work cage



Multifunctional support control



Multi-bevelled boom technology



Multi-Chassis STEIGER® Brands



HONEST, RELIABLE & REACTIVE
SOLUTIONS FOR WORKING AT HEIGHT



CONTACT US

0800 865 4455
info@hiresafesolutions.com
www.hiresafesolutions.com

