



Bronto Skylift S-HLA



HONEST, RELIABLE & REACTIVE
SOLUTIONS FOR WORKING AT HEIGHT

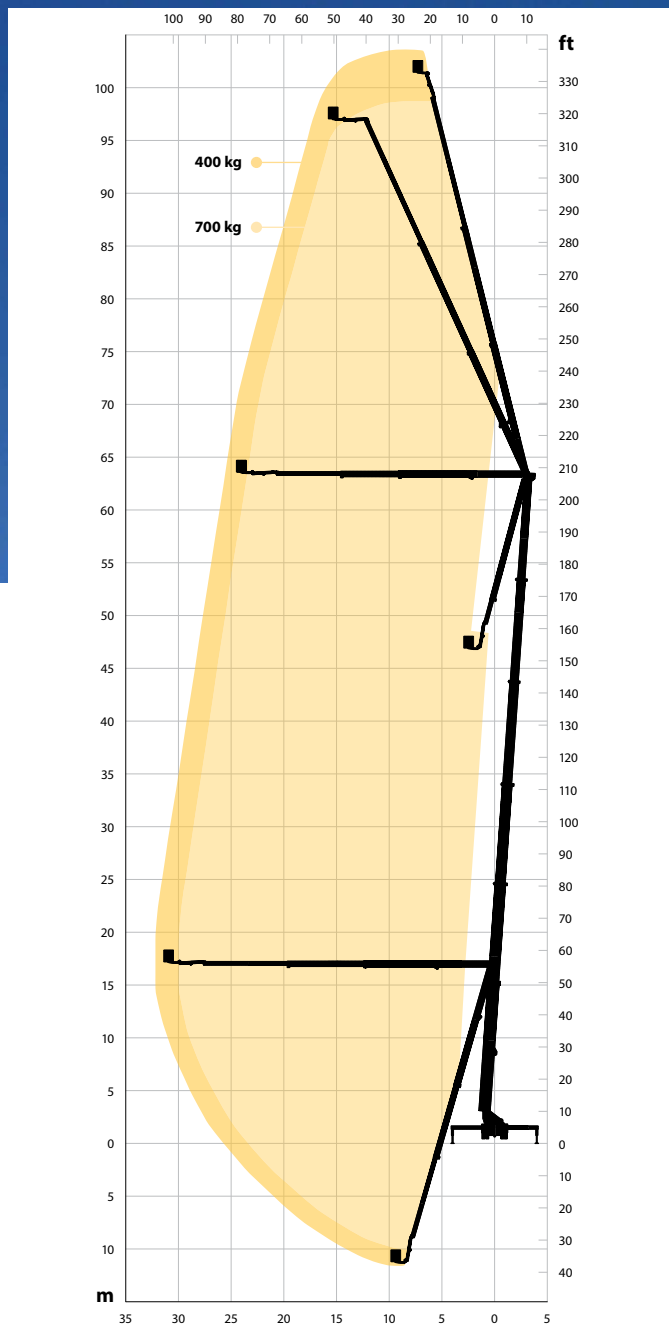


CONTACT US

☎ 0800 865 4455
✉ info@hiresafesolutions.com
🌐 www.hiresafesolutions.com



S104HLA



Diagrams presented with standard cage. Variations apply.

* depending on chassis



104 m



33 m



102 m

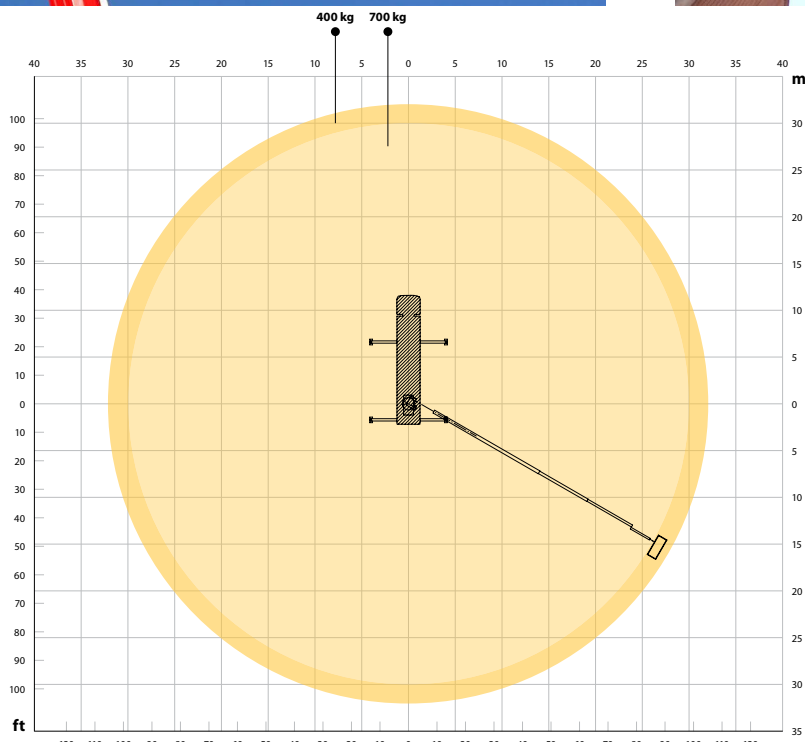


600 kg



1,1 x 2,4 m (3,7 m²)





Diagrams presented with standard cage. Variations apply.

* depending on chassis



2 x 85°



360°



4 * m



16,3 m *



62 t *



OPTIONS, SIMPLIFIED SELECTION	S XR	S XDT	S HLA	S EM
DECKING AND STEPS				
Aluminium sides on the decking				
Additional sidelights (Sidelights R48 ECE as std)				
Recessed foldable step, left/right				
Pull out step for rear of the platform, left/right				
Ladder type step with railings, left/right				
LOCKERS AND SIDEPANELS				
Complete locker for outrigger controls				
Tool box below decking				
Aluminum lockers with roller shutters				
Timber rack, mounted below decking				
GROUND PADS AND BRACKETS				
4 ground pads with aluminium brackets				
Conductive ground pads				
4 round ground pads insted of std pads				
JACKING SYSTEM				
Automatic, fully variable jacking				
Bronto Loadman for measuring the bearing capacity of ground				
Radio remote control for outriggers				
BACK-UP SYSTEMS FOR HYDRAULICS				
Petrol emergency back-up system by Kohler engine				
Petrol emergency back-up system by Kohler engine, electric start				
Diesel emergency back-up system by HATZ 1D81C silenced, electric start/stop				
Electric emergency back-up system by a battery pump				
Electric motor drive for the hydraulics				
MAIN DRIVE ENGINES				
Hydraulic pump driven by chassis' PTO				
Diesel engine HATZ 4H50TIC Semi-Silent				
POWER/AIR/WATER SUPPLY AND OUTLETS				
Electricity between turntable and cage, different voltages available				
Air/water supply between the turntable and cage				
Hydraulic outlets in the cage				
Hydraulic outlets and pressure intensifiers				
INTERCOM AND RADIO				
Intercom between the cage and ground control station				
GENERATORS				
Hydraulic generator with different power outputs				
CAGES AND ACCESSORIES				
Tree cutter fence for the cage				
Finger protection railing				
Ultra sonic collision guard with four sensors				
Cage rotation $\pm 220^\circ$ (S47XR only with std rotation $\pm 90^\circ$)				
Safety harness attachment points (4pc) according to EN795				
Working cage 1,05 x 2,4 x 1,1 m, SWL 700 kg				
Extendable working cage 1,05 x 2,4 (-3,7) x 1,1 m, SWL 600kg				
Rotating camera cage				
Extendable working cage 0,9 x 2,4 (-3,4) x 1,1 m, SWL 350kg				
Working cage 0,9 x 2,04 x 1,1 m, SWL 500 kg				
Wide working cage 0,9 x 2,40 x 1,1 m, SWL 450 kg				
Lighting rig, SWL 300 kg				
RF Antenna rig, width 5,7 m, SWL 50kg				
Cage floor heating				
Working cage extension module, 1,0 m, capacity 100kg				
MATERIAL HANDLING				
Detachable winch in the working cage, SWL 400 kg, 2 fold out feet for the load (200kg/each)				
Element lifting system, capacity 150 kg.				
Mast section lifter, capacity 150 kg				
Intelligent lifting eye mounted on to the last section of the main boom, max. load 2200 kg				
TURNTABLE CONTROL STATION				
Full lower control station at the turntable				
BRONTO+ CONTROL SYSTEM				
Engine information and warnings on display				
Telecontrol or Compass remote connection (for warranty period, optional after that)				
Memory function, height and outreach limitations and different user profiles				
Wireless remote control for boom movements				
Service counter and reminders				
Continuous rotation 360°				
High Voltage detector				
BEACONS AND LIGHTS				
Various LED warning beacons and flashing lights				
Various working lights 24V				
CHASSIS				
Reversing camera with 7" color display in the cabin				
Battery charger (DEFA) 2x20A, suitable for battery sizes up to 500Ah				
MISCELLANEOUS				
Safety Rail System, one rail on one side, without harness or self-retracting reel				

Standard

Available

Not available





Added safety and efficiency

High safety does not decrease the efficiency, it does the opposite.

Control system for added safety and ease

Safety is about creating a safer working environment. An advanced control system increases the safety on your worksites by letting you focus on the job at hand.

The unit includes the Bronto+ control system, which provides precise and stable movements and is very simple and smooth to operate.

Thanks to a geometry-based, fully automatic outreach control system, you can be sure of reaching your targets every single day, regardless of rain, shine or wind.

Feel it in your fingers

The rugged HLA platforms will keep you steady and allow you to do the job you are up there for. Even at maximum height or outreach, the cage has unmatched stability.

To get the job done efficiently, in addition to a steady cage you need a control system that gets you close enough every time. The movements of a Bronto platform are extremely precise. Great performance and great heights, all at your fingertips.

