

XGS32K

Telescopic boom lift



SOLID
TO SUCCEED



FEATURES

MEASUREMENTS

32.6m working height
Up to 300/460kg lift capacity

PRODUCTIVITY

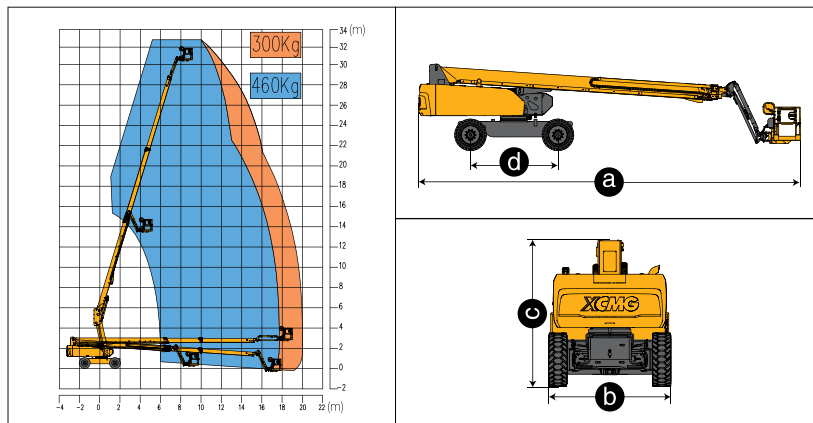
2.4m x 0.9m working platform
4 driving wheels
2 steering wheels
4 wheel brake system
45% theoretical gradeability
360° turntable rotation
Axle balance system
Lift and lower alarm
Platform automatic leveling system
Proportional handle control
Drive alarm
Hourmeter recorder
Lockable canopy
Initiative anti-extrusion system
Hydraulic oil cooler
Turntable control box
Flashing beacon
Solid rubber tires

POWER

Engine protection devices
Kubota Euro stage V emission
12V DC emergency power

OPTIONS

Tool tray
Platform working light
Foam-filled rough terrain tires
AC power to the platform
Platform anti-collision device



Item	Unit	XGS32K
Working height	m	32.6
Platform height	m	30.6
Working radius	m	20
Lift capacity	kg	300/460
Occupant capacity	-	3
Boom luffing range	°	-4~+73
Fly jib luffing range	°	-65~+70
Turntable rotation	°	360
Platform rotation	°	160
Drive speed (retracted/extended)	km/h	5.5/0.6
Turning radius (inside/outside)	m	4.4/6.25
Tailswing	mm	2030
Ground clearance	mm	400
Gradeability	%	45
Tires	-	15-625
Power source	-	Kubota V2607
Rated power	kW/(r/min)	48/(2400)
Fuel tank	L	180
Hydraulic tank	L	210
Weight	kg	18500
Platform size	mm	2400x900
a Length (transportation)	mm	13100/12110
b Width	mm	2490
c Height	mm	2920
d Wheelbase	mm	3000

