

# XGS58E1

Telescopic boom lift



**SOLID**  
TO SUCCEED



## FEATURES

### MEASUREMENTS

58.6m working height  
Up to 230/450kg lift capacity

### PRODUCTIVITY

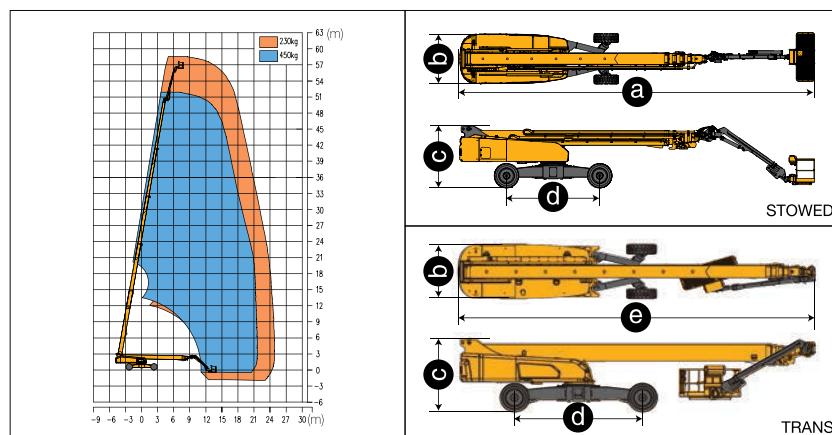
2.4m x 0.9m steel platform  
4 driving wheels  
4 steering wheels  
45% theoretical gradeability  
360° continuous turntable rotation  
160° platform rotation  
Enable switch  
Hourmeter recorder  
Drive alarm  
Tilt alarm  
Overload alarm  
Lift and lower alarm  
Turntable control box  
Flashing beacon  
Hydraulic oil cooler  
Steering lever control  
Lockable canopy  
Platform automatic leveling system  
Fully proportional multi-function controls  
Foam-filled rough terrain tires

### POWER

Engine protection devices  
12V DC emergency power

## OPTIONS

Tool tray  
Platform working light  
AC power to the platform  
Platform anti-collision device



Item	Unit	XGS58E1
Working height	m	58.6
Platform height	m	56.6
Working radius	m	24.8
Lift capacity	kg	230/450
Occupant capacity	-	3
Boom luffing range	°	-1~+80
Fly jib luffing range	°	-45~+75
Turntable rotation	°	360
Platform rotation	°	160
Drive speed (retracted/extended)	km/h	4.5/0.5
Turning radius axle retracted (inside/outside)	m	7.6/9.5
Turning radius axle extended (inside/outside)	m	2.8/6.6
Tailswing	mm	2320
Ground clearance	mm	250
Gradeability	%	45
Tires	-	455/55-25 R28
Power source	-	Cummins F3.8
Rated power	kW/(r/min)	75/(2200)
Fuel tank	L	200
Hydraulic tank	L	250
Weight	kg	27900
Platform size	mm	2400x900
Transportation dimension	mm	14600x2490x3070
a Length	mm	19450
b Width	mm	2490
c Height	mm	3070
d Wheelbase (axle retracted/axle extended)	mm	5200/4590

