

XGS58E

Telescopic boom lift

FEATURES

MEASUREMENTS

58.6m working height
Up to 230/450kg lift capacity

PRODUCTIVITY

- 2.4m x 0.9m steel platform
- 4 driving wheels
- 4 steering wheels
- 45% theoretical gradeability
- Solid rubber tires
- Platform automatic leveling system
- 160° platform rotation
- Fully proportional multi-function controls
- Hydraulic oil cooler
- Drive enable
- Hourmeter record
- Tilt alarm
- Lift and lower alarm
- Drive alarm
- 360° continuous turntable rotation
- Lockable turntable cover
- High/Slow speed mode
- Turntable control box
- Engine status display
- Steering lever control
- Flashing beacon
- Emergency power unit
- 12V DC emergency power

POWER

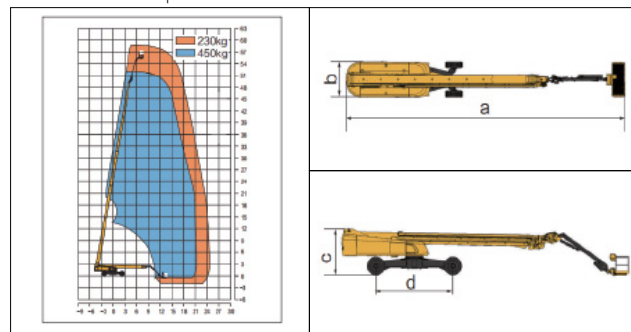
- Engine protection devices
- Cummins Euro stage V emission

OPTIONS

- Foam-filled rough terrain tires
- Tool tray
- Platform working light
- AC power to the platform
- Platform anti-collision device



Work Curve Graph



Item	Unit	XGS58E
Working Height	m	58.6
Platform Height	m	56.6
Working radius	m	24.8
Lift capacity	kg	230/450
Boom luffing range	°	-1~+80
Fly jib luffing range	°	-45~+75
Turntable rotation	°	360
Platform rotation	°	160
Tailswing	mm	2320
Drive Speed	km/h	4.5
Turning Radius axle retracted	(inside) m	7.6
	(outside) m	9.5
Turning Radius axle extended	(inside) m	2.8
	(outside) m	6.6
Ground clearance	mm	250
Gradeability	%	45
Tires	-	455/55-25 R28
Power source	-	Cummins F3.8
Rated power	kW(r/min)	75/2200
Fuel tank	L	200
Hydraulic tank	L	250
Weight	kg	27900
Platform size	mm	2400x900
a Length	mm	19450
b Width (axle retracted/axle extended)	mm	2490/5030
c Height	mm	3070
d Wheelbase (axle retracted/axle extended)	mm	5220/4590

