

XGS40E

Telescopic boom lift

FEATURES

MEASUREMENTS

40.2m working height
Up to 300/460kg lift capacity

PRODUCTIVITY

2.4m x 0.9m steel platform
4 driving wheels
4 steering wheels
40% theoretical gradeability
Axle balance system
Solid rubber tires
Platform automatic leveling system
160° platform rotation
Fully proportional multi-function controls
Hydraulic oil cooler
Drive enable
Hourmeter record
Tilt alarm
Lift and lower alarm
Drive alarm
360° continuous turntable rotation
Lockable turntable cover
High/Slow speed mode
Turntable control box
Engine status display
Steering lever control
Flashing beacon
Emergency power unit
12V DC emergency power

POWER

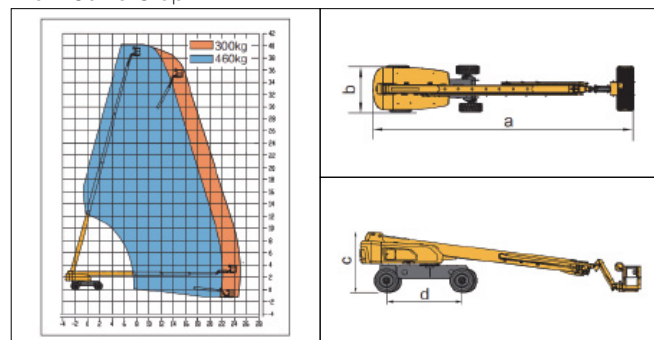
Engine protection devices
Kubota Euro stage V emission

OPTIONS

Foam-filled rough terrain tires
Tool tray
Platform working light
AC power to the platform
Platform anti-collision device



Work Curve Graph



Item	Unit	XGS40E
Working Height	m	40.2
Platform Height	m	38.2
Working radius	m	24.9
Lift capacity	kg	300/460
Boom luffing range	°	-6.5~+75
Fly jib luffing range	°	-60~+70
Turntable rotation	°	360
Platform rotation	°	160
Tailswing	mm	2355/1700
Drive Speed	km/h	5
Turning Radius axle retracted	(inside) m	3.3
	(outside) m	6.8
Turning Radius axle extended	(inside) m	2.4
	(outside) m	5.8
Ground clearance	mm	260
Gradeability	%	40
Tires	-	445/50D710
Power source	-	Kubota V3307
Rated power	kW(r/min)	54.6 (2200)
Fuel tank	L	180
Hydraulic tank	L	260
Weight	kg	21460
Platform size	mm	2400x900
a Length	mm	14060
b Width (axle retracted/axle extended)	mm	2490/3800
c Height	mm	3000
d Wheelbase (axle retracted/axle extended)	mm	2490/3800

