

Specifications

Model	Z-80/60	
Measurements	Metric	US
Working height maximum*	25.77 m	84 ft
Platform height maximum	23.77 m	78 ft
Horizontal reach maximum	18.29 m	60 ft
Up and over clearance maximum	8.83 m	29 ft
Below ground reach	4.83 m	15 ft 10 in
A Platform length - 8 ft / 6 ft	0.91 m/0.76 m	3 ft/2 ft 6 in
B Platform width - 8 ft / 6 ft	2.44 m/1.83 m	8 ft/6 ft
C Height - stowed	3.00 m	9 ft 10 in
D Length - stowed	11.27 m	37 ft
E Length - transport	11.27 m	37 ft
F Width	2.49 m	8 ft 2 in
G Wheelbase	2.85 m	9 ft 4 in
H Ground clearance - center	0.30 m	12 in

Productivity

Lift capacity	227 kg	500 lbs
Platform rotation	160°	160°
Vertical jib rotation	135°	135°
Turntable rotation	360° continuous	
Turntable tailswing - riser up	1.17 m	3 ft 10 in
Turntable tailswing - riser down	2.24 m	7 ft 4 in
Drive speed - stowed	4.83 km/h	3.0 mph
Drive speed - raised**	1.1 km/h	0.68 mph
Lift speed to full height	76 sec	76 sec
Gradeability - 4WD - stowed***	45%	45%
Turning radius - 2WS inside	4.42 m	14 ft 6 in
Turning radius - 2WS outside	7.47 m	24 ft 6 in
Turning radius - 4WS inside	2.13 m	7 ft
Turning radius - 4WS outside	4.57 m	15 ft
Controls	12 V DC proportional	
Tyres	18-625 NHS	

Power

Power source	Deutz TD2011 L04i turbo diesel 4-cylinder 74hp (55kW) Stage IIIA Deutz TCD2.2 L3 turbo diesel 3-cylinder 74hp (55 kW) Stage V	
Auxiliary power unit	12 V DC	12 V DC
Hydraulic tank capacity	170 L	45 gal
Fuel tank capacity	132 L	35 gal

Sound & Vibration Levels

Sound pressure level (ground workstation)	85 dBA	85 dBA
Sound pressure level (platform workstation)	74 dBA	74 dBA
Vibration	<2.5 m/s ²	<8 ft 2 in/s ²

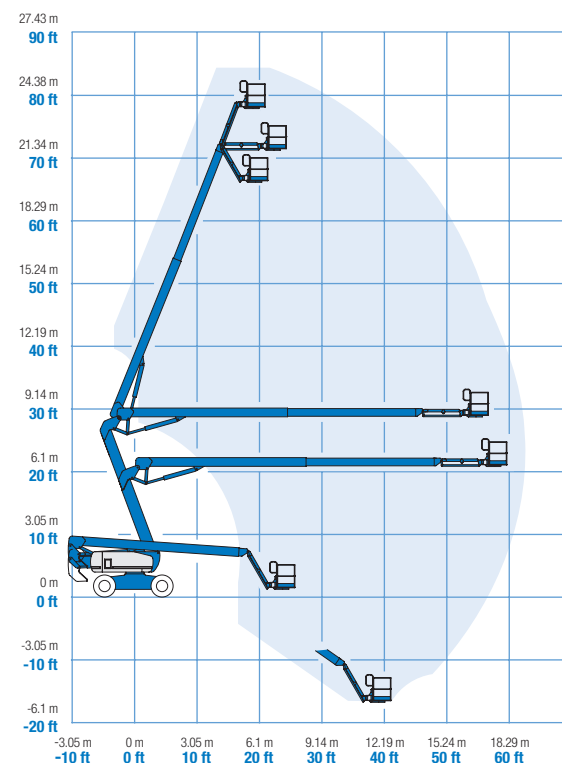
Weight****

CE 4WD/2WS	16,284 kg	35,900 lbs
CE 4WD/4WS	17,010 kg	37,500 lbs

Standards Compliance

EU Directives: 2006/42/EC - Machinery (harmonized standard EN280:2013+A1:2015); 2004/108/EC (EMC); 2000/14/EC (Outdoor Noise)

Range Of Motion Z-80/60

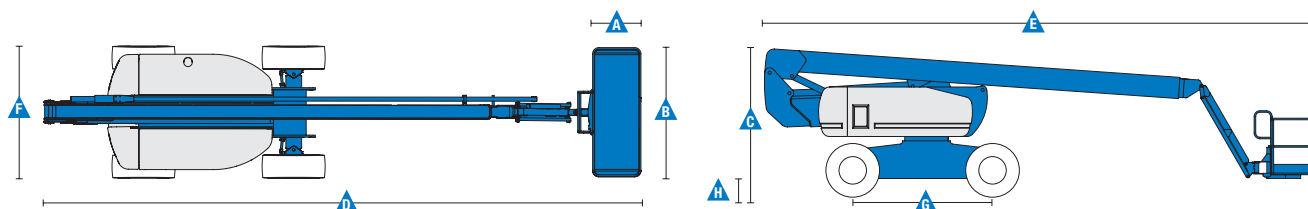


* The metric equivalent of working height adds 2 m to platform height. U.S. adds 6 ft to platform height.

** In lift mode (platform raised), the machine is designed to operate on firm, level surfaces only.

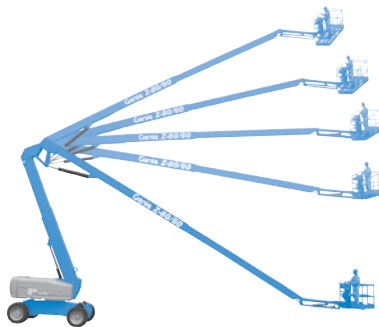
*** Gradeability applies to driving on slopes. See operator's manual for details regarding slope ratings.

**** Weight will vary depending on options and/or country standards.



Features

Standard Features	Easily Configured To Meet Your Needs	Options & Accessories
Measurements <ul style="list-style-type: none"> 25.77 m (84 ft) working height 18.29 m (60 ft) horizontal reach 8.83 m (29 ft) up and over clearance Up to 227 kg (500 lbs) lift capacity Productivity <ul style="list-style-type: none"> Self-leveling platform Hydraulic platform rotation Proportional joystick controls Telematics-Ready Connector Thumb rocker steering On board diagnostics Hydraulic oil cooler Drive enable Chassis tilt drive function cut-out AC power cord to platform Horn Hour meter Tilt alarm Descent & travel alarms Flashing beacon 360° continuous turntable rotation Locking turntable covers Full-time positive traction drive Two speed wheel motors Four steering modes: front, rear, crab and coordinated Configurable controls to limit lift height to 70 ft Lift Guard™ Contact Alarm Lift Connect™ Telematics Lift Tool™ Work Tray Power <ul style="list-style-type: none"> 12 V DC auxiliary power Anti-restart engine protection Auto engine fault shutdown Engine monitoring display Dual battery Engine status display Intake air heater (Deutz engine) 	Platform Options <ul style="list-style-type: none"> Steel 2.44 m (8 ft) tri-entry with side swing gate (standard) Steel 1.83 m (6 ft) dual entry with side swing gate Jib <ul style="list-style-type: none"> Articulating 1.83 m (6 ft) jib boom with 135° range Engine Options <ul style="list-style-type: none"> Deutz TD2011 L04i turbo diesel 4-cylinder 74hp (55kW) Stage IIIA Deutz TCD2.2 L3 turbo diesel 3-cylinder 74hp (55 kW) Stage V Drive/Steer Options <ul style="list-style-type: none"> 4 x 4 x 2 (standard) 4 x 4 x 4 Axle <ul style="list-style-type: none"> Active Oscillation (standard) Tyre Options <ul style="list-style-type: none"> Rough terrain foam-filled (standard) Rough terrain non-marking foam-filled 	Productivity Options <ul style="list-style-type: none"> Lift Guard™ Half and Full mesh platform⁽¹⁾ Platform auxiliary top rail Air line to platform⁽¹⁾ Power to platform: plug, socket, with optional Residual-current Circuit Breaker with Overcurrent protection Work lights package (2 on chassis, 2 on platform)⁽¹⁾ Dual axis joystick steering⁽¹⁾ Biodegradable hydraulic oil Aircraft protection kit^(1,4): platform foam padding and platform disable system Hostile environment kit⁽¹⁾: cylinder bellows, boom wiper seals, platform and ground control box covers Deluxe hostile environment kit⁽¹⁾: adds to basic kit center turntable shield, ring gear guard, tail pipe guard, engine cover flaps and air pre-cleaner Track & Trace⁽²⁾ (GPS unit providing machine location & operating information) Chassis tilt lift function cut-out (software setting) Lockable platform control box covers Operator Protective Structure⁽³⁾ Tool Tray⁽³⁾ Genie® Tech Pro™ Link Hand-held Diagnostics Device Power Options <ul style="list-style-type: none"> AC generator packages (110V/60Hz - 220V/50Hz, 3000W) Diesel air intake pre-cleaner⁽¹⁾ Diesel catalytic scrubber muffler⁽¹⁾ (Stage IIIA engine only) Low temperature cut-out module EMEAR Cold Start kit: Inc. Engine heater & battery charger Cold weather packages⁽¹⁾ Positive air shutdown system



Axle

- Active oscillation

⁽¹⁾ Factory-fit option only

⁽²⁾ Includes a first 2 years subscription

⁽³⁾ Aftermarket only

⁽⁴⁾ Reduces load capacity of about 27 kg (60 lb). Only available with 1.83 m (6 ft) platform, not available with any other platforms nor options on the platform

Europe, Middle East, Africa and Russia Region

United Kingdom and Europe, T: +44 800 988 3739 (toll free) or +31 165 519 349

Middle East, Southern Africa, Russia and Turkey, T: +971 4 399 0381

Visit www.genielift.com/en-gb/about-genie/locations to view our global locations list.

Worldwide Manufacturing And Distribution

Australia · Brazil · Caribbean · Central America · China · France · Germany · Italy · Japan · Korea · Mexico · Russia · Southeast Asia · Spain · Sweden · United Arab Emirates · United Kingdom · United States

Product specifications and prices are subject to change without notice or obligation. The photographs and/or drawings in this document are for illustrative purposes only. Refer to the appropriate Operator's Manual for instructions on the proper use of this equipment. Failure to follow the appropriate Operator's Manual when using our equipment or to otherwise act irresponsibly may result in serious injury or death. The only warranty applicable to our equipment is the standard written warranty applicable to the particular product and sale and we make no other warranty, express or implied. Products and services listed may be trademarks, service marks or trade names of Terex Corporation and/or their subsidiaries in the USA and many other countries. Genie is a registered trademark of Terex South Dakota, Inc. © 2020 Terex Corporation.

