

### Specifications

Model	Z-80/60	
Measurements	Metric	US
Working height maximum*	25.77 m	84 ft
Platform height maximum	23.77 m	78 ft
Horizontal reach maximum	18.29 m	60 ft
Up and over clearance maximum	8.83 m	29 ft
Below ground reach	4.83 m	15 ft 10 in
<b>A</b> Platform length - 8 ft / 6 ft	0.91 m/0.76 m	3 ft/2 ft 6 in
<b>B</b> Platform width - 8 ft / 6 ft	2.44 m/1.83 m	8 ft/6 ft
<b>C</b> Height - stowed	3.00 m	9 ft 10 in
<b>D</b> Length - stowed	11.27 m	37 ft
<b>E</b> Length - transport	11.27 m	37 ft
<b>F</b> Width	2.49 m	8 ft 2 in
<b>G</b> Wheelbase	2.84 m	9 ft 4 in
<b>H</b> Ground clearance - center	0.30 m	12 in

### Productivity

Lift capacity	227 kg	500 lbs
Platform rotation	160°	160°
Vertical jib rotation	135°	135°
Turntable rotation	360° continuous	
Turntable tailswing - riser up	1.17 m	3 ft 10 in
Turntable tailswing - riser down	2.24 m	7 ft 4 in
Drive speed - stowed	4.83 km/h	3.0 mph
Drive speed - raised**	30 cm/s	1 ft/s
Lift speed to full height	88 sec	88 sec
Gradeability - 2WD - stowed***	30%	30%
Gradeability - 4WD - stowed***	45%	45%
Turning radius - 2WS inside	4.42 m	14 ft 6 in
Turning radius - 2WS outside	7.47 m	24 ft 6 in
Turning radius - 4WS inside	2.13 m	7 ft
Turning radius - 4WS outside	4.57 m	15 ft
Controls	12 V DC proportional	
Tyres	18-625 NHS	

### Power

Power source	Deutz TD 2011 L04i 4 cylinder diesel 74 hp (55 kW) Perkins 804D-33 4 cylinder diesel 63 hp (47 kW) Continental TME27 4 cylinder gas/LPG 74 hp (55 kW)	
Auxiliary power unit	12 V DC	12 V DC
Hydraulic tank capacity	170 L	45 gal
Fuel tank capacity – diesel machines	132.5 L	35 gal
Fuel tank capacity – gas/LPG machines	113.6 L	30 gal

### Sound & Vibration Levels

Sound pressure level (ground workstation)	85 dBA	85 dBA
Sound pressure level (platform workstation)	74 dBA	74 dBA
Vibration	<2.5 m/s <sup>2</sup>	<8 ft 2 in/s <sup>2</sup>

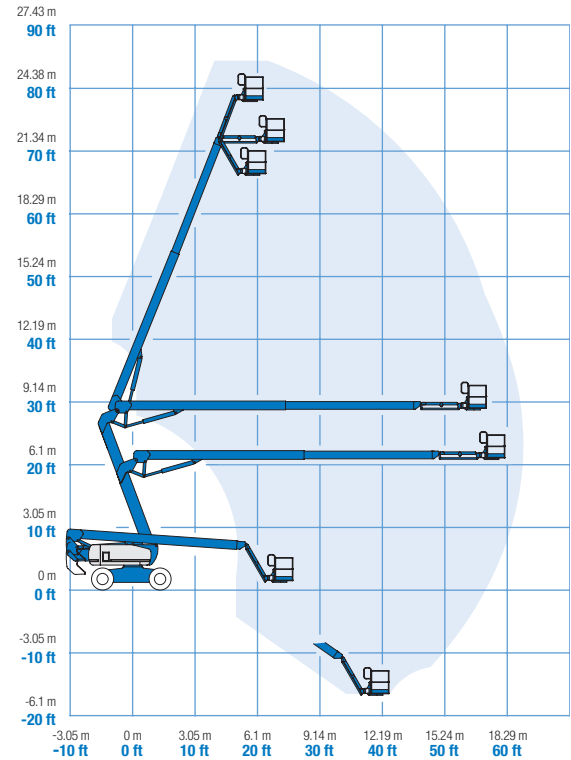
### Weight\*\*\*\*

CE 4WD/2WS	16,284 kg	35,900 lbs
CE 4WD/4WS	17,010 kg	37,500 lbs
CE Max	20,135 kg	44,390 lbs

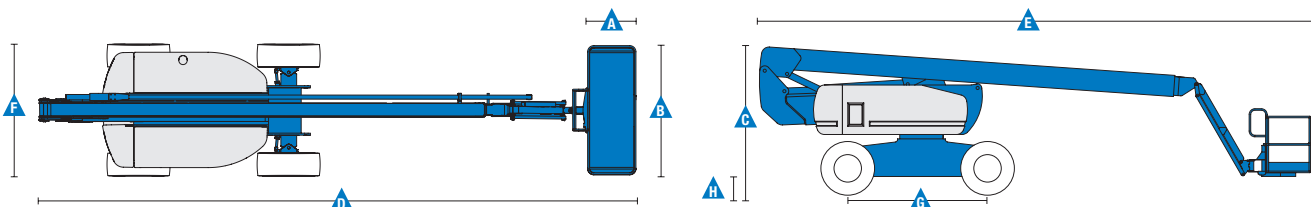
### Standards Compliance

EU Directives: 2006/42/EC - Machinery (harmonized standard EN280:2001+A2:2009); 2004/108/EC (EMC); 2000/14/EC (Outdoor Noise)

### Range Of Motion Z-80/60



\* The metric equivalent of working height adds 2 m to platform height. U.S. adds 6 ft to platform height.  
\*\* In lift mode (platform raised), the machine is designed to operate on firm, level surfaces only.  
\*\*\* Gradeability applies to driving on slopes. See operator's manual for details regarding slope ratings.  
\*\*\*\* Weight will vary depending on options and/or country standards.



### Features

Standard Features	Easily Configured To Meet Your Needs	Options & Accessories
-------------------	--------------------------------------	-----------------------

#### Measurements

- 25.77 m (84 ft) working height
- 18.29 m (60 ft) horizontal reach
- 8.83 m (29 ft) up and over clearance
- Up to 227 kg (500 lbs) lift capacity

#### Productivity

- 1.83 m (6 ft) jib with 135° range
- Self-levelling platform
- Hydraulic platform rotation
- Fully proportional Hall effect controls
- Thumb rocker steering
- On board diagnostics
- ALC 1000 electronic control system
- Hydraulic oil cooler
- Drive enable
- AC power cord to platform
- Horn
- Hour meter
- Tilt alarm
- Descent & travel alarms
- Flashing beacon
- 360° continuous turntable rotation
- Locking turntable covers
- Full-time positive traction drive
- Two speed wheel motors
- Four steering modes: front, rear, crab and coordinated
- Configurable controls to limit lift height to 70 ft
- Certified load sensor

#### Power

- 12 V DC auxiliary power
- Anti-restart engine protection
- Auto engine fault shutdown
- Engine monitoring display
- Block heater (Continental engine)
- Dual battery
- Engine status display

#### Platform Options

- Steel 2.44 m (8 ft) (standard)
- Steel 1.83 m (6 ft)
- 2.44 m (8 ft) tri-entry

#### Jib

- Articulating 1.83 m (6 ft) jib boom

#### Engine Options

- Deutz diesel 55 kW (74 hp)
- Perkins diesel 47 kW (63 hp)
- Continental gas/LPG 55 kW (74 hp)

#### Drive/Steer Options

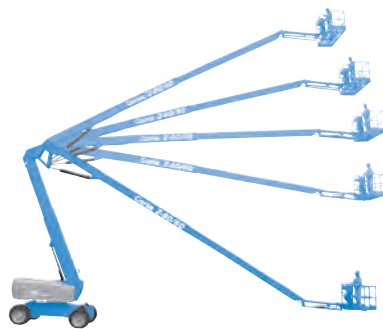
- 4 x 4 (standard)
- 4 x 4 x 2 (standard)
- 4 x 4 x 4

#### Axle

- Active oscillation

#### Tyre Options

- Rough terrain foam-filled (standard)
- Rough terrain non-marking foam-filled



#### Productivity Options

- Platform swing gate
- Half mesh platform inserts with swing gate
- Platform top auxiliary rail
- Weld leads to platform <sup>(2)</sup>
- Air line to platform
- Power to platform (incl. plug, socket and ground fault interrupt leakage on request)
- Work lights package (2 on chassis, 2 on platform)
- Dual axis joystick steering
- Biodegradable hydraulic oil <sup>(2)</sup>
- Aircraft protection kit <sup>(1,2)</sup>: platform foam padding and platform disable system
- Hostile environment kit <sup>(2)</sup>: cylinder bellows, boom wiper seals, platform and ground control box covers
- Deluxe hostile environment kit <sup>(1,2)</sup>: adds to basic kit center turntable shield, ring gear guard, tail pipe guard, engine cover flaps and air pre-cleaner)
- Track & Trace <sup>(3)</sup> (GPS unit providing machine location & operating information)
- Lockable platform control box covers
- Tool tray

#### Power Options

- AC generator packages (110V/60Hz - 220V/50Hz, 3000W) <sup>(2)</sup>
- Hydraulic MTE Generator kit (110V/120V-220V/240V)
- Deutz V-Belt Generator kit (110V/120V) <sup>(1)</sup>
- Diesel air intake pre-cleaner <sup>(2)</sup>
- Diesel catalytic scrubber muffler <sup>(2)</sup>
- LPG tank only, steel, 15.19 kg (33.5 lbs) capacity <sup>(2)</sup>
- Low temperature cut-out module
- Engine heater option <sup>(1)</sup>
- Refinery kit with spark arrestor and electric or mechanical Chalwyn valve <sup>(1)</sup>

<sup>(1)</sup> Available on selected models only. See your Genie representative for further information.  
<sup>(2)</sup> Factory-fit option only  
<sup>(3)</sup> Includes a first 2 years subscription