

Specifications

Models	Z-51/30J RT	
Measurements	Metric	US
Working height maximum*	17.59 m	57 ft 8 in
Platform height maximum	15.59 m	51 ft 2 in
Horizontal reach maximum	9.37 m	30 ft 9 in
Up-and-over clearance maximum	7.39 m	24 ft 3 in
A Platform length	0.76 m	2 ft 6 in
B Platform width	1.83 m	6 ft
C Height - stowed	2.13 m	7 ft
D Length - stowed	7.58 m	24 ft 11 in
E Width	2.29 m	7 ft 6 in
F Wheelbase	2.03 m	6 ft 8 in
G Ground clearance - centre	0.375 m	1 ft 3 in

Productivity

Lift capacity	227 kg	500 lbs
Platform rotation	160°	160°
Vertical jib rotation	135° (+78°/-57°)	
Turntable rotation	355° non-continuous	
Turntable tailswing	zero	zero
Drive speed - stowed	8 km/h	5 mph
Drive speed - raised**	1 km/h	0.61 mph
Gradeability - 4WD - stowed***	45%	45%
Turning radius - inside	1.68 m	5 ft 6 in
Turning radius - outside	4.50 m	14 ft 9 in
Controls	12 V DC proportional	
Tyres	315/55 D20 foam filled	

Power

Power source	Deutz D2011 L03i 3 cylinder diesel 35.8 kW (48 hp) Deutz TD2.2 L3 turbo diesel, 3 cylinder 49hp (37kW) Stage V	
Auxiliary power unit	12 V DC	12 V DC
Hydraulic tank capacity	90.9 L	24 gal
Fuel tank capacity	64.4 L	17 gal

Sound & Vibration Levels

Sound pressure level (ground workstation)	86 dBA	86 dBA
Sound pressure level (platform workstation)	79 dBA	79 dBA
Vibration	<2.5 m/s ²	<8 ft 2 in/s ²

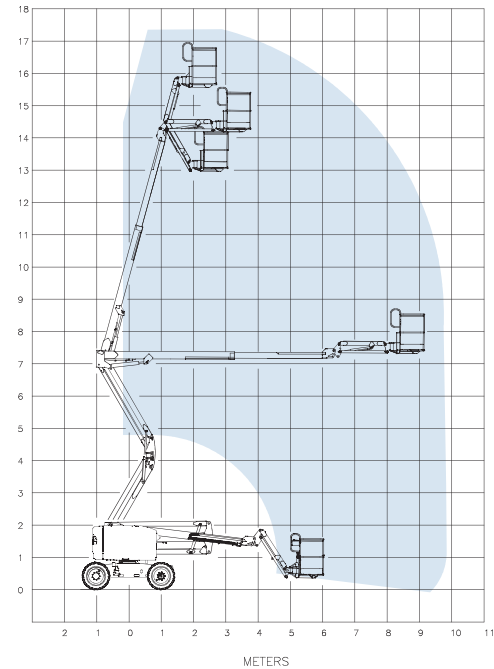
Weight****

	7,394 kg	16,300 lbs
--	----------	------------

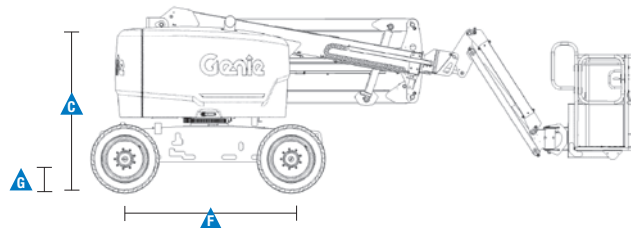
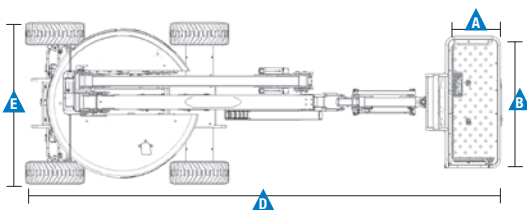
Standards Compliance

EU Directives: 2006/42/EC - Machinery (harmonized standard EN280:2013+A1:2015); 2004/108/EC (EMC); 2000/14/EC (Outdoor Noise)

Range Of Motion Z-51/30J RT



* The metric equivalent of working height adds 2 m to platform height. U.S. adds 6 ft to platform height.
 ** In lift mode (platform raised), the machine is designed to operate on firm, level surfaces only.
 *** Gradeability applies to driving on slopes. See Operator's Manual for details regarding slope ratings.
 **** Weight will vary depending on options and/or country standards.



Features

Standard Features	Easily Configured To Meet Your Needs	Options & Accessories
-------------------	--------------------------------------	-----------------------

Measurements

Z-51/30J RT

- 17.59 m (57 ft 8 in) working height
- 9.37 m (30 ft 9 in) horizontal reach
- 7.39 m (24 ft 3 in) up and over clearance
- Up to 227 kg (500 lbs) lift capacity

Productivity

- Self-levelling platform
- Proportional joystick controls
- Telematics-Ready Connector
- Thumb rocker steering
- Drive enable
- Chassis tilt drive function cut-out
- AC power cord to platform
- Horn
- Hour meter
- Tilt alarm
- Descent & travel alarms
- Flashing beacon
- 355° non-continuous turntable rotation
- Positive traction drive
- Two speed wheel motors
- Hydraulic oil cooler
- Dual parallelogram for vertical wall tracking
- Zero Tailswing
- Lift Connect™ Telematics
- Lift Guard™ Contact Alarm
- Lift Tool™ Work Tray

Power

- 12 V DC auxiliary power
- Engine protection package
- Deutz intake air heater

Platform

- Steel 1.83 m (6 ft) dual entry with sideswing gate (standard)

Jib

- Articulating 1.52 m (5 ft) jib boom

Power

- Deutz D2011 L03i 3 cylinder diesel 35.8 kW (48 hp)
- Deutz TD2.2 L3 turbo diesel, 3 cylinder 49hp (37kW) Stage V

Drive

- 4 x 4

Axle

- Active oscillation (standard)

Tyre Options

- Rough terrain foam-filled (standard)
- Rough terrain non-marking foam filled

Productivity

- Lift Guard™ Half and Full mesh platform⁽¹⁾
- Platform auxiliary top rail
- Air line to platform
- Power to platform: plug, socket, with optional Residual-current Circuit Breaker with Overcurrent protection
- Work lights package (2 on chassis, 2 on platform)⁽¹⁾
- Biodegradable hydraulic oil
- Chassis tilt lift function cut-out (software setting)
- Track & Trace⁽²⁾ (GPS unit providing machine location & operating information)
- Lockable platform control box cover
- Operator Protective Structure⁽³⁾
- Tool Tray⁽³⁾
- Fall Arrest Bar⁽³⁾

Power

- Diesel catalytic scrubber
- Engine gauge package (oil pressure & temperature and voltage)⁽¹⁾
- Lift Power™ 3kW AC generator, 110V/50Hz or 220V/50Hz
- Low temperature cut-out module
- EMEAR Cold Start kit: Inc. Engine heater & battery charger



⁽¹⁾ Factory-fit option only
⁽²⁾ Includes a first 2 years subscription
⁽³⁾ Aftermarket only

Europe, Middle East, Africa and Russia Region

United Kingdom and Europe, T: +44 800 988 3739 (toll free) or +31 165 519 349

Middle East, Southern Africa, Russia and Turkey, T: +971 4 399 0381

Visit www.genielift.com/en-gb/about-genie/locations to view our global locations list.

Worldwide Manufacturing And Distribution

Australia · Brazil · Caribbean · Central America · China · France · Germany · Italy · Japan · Korea · Mexico · Russia · Southeast Asia · Spain · Sweden · United Arab Emirates · United Kingdom · United States

Product specifications and prices are subject to change without notice or obligation. The photographs and/or drawings in this document are for illustrative purposes only. Refer to the appropriate Operator's Manual for instructions on the proper use of this equipment. Failure to follow the appropriate Operator's Manual when using our equipment or to otherwise act irresponsibly may result in serious injury or death. The only warranty applicable to our equipment is the standard written warranty applicable to the particular product and sale and we make no other warranty, express or implied. Products and services listed may be trademarks, service marks or trade names of Terex Corporation and/or their subsidiaries in the USA and many other countries. Genie is a registered trademark of Terex South Dakota, Inc. © 2020 Terex Corporation.

