

### Specifications

| Models                             | Z-40/23N |            | Z-40/23N RJ |            |
|------------------------------------|----------|------------|-------------|------------|
| Measurements                       | Metric   | US         | Metric      | US         |
| Working height maximum*            | 14.32 m  | 46 ft 5 in | 14.32 m     | 46 ft 5 in |
| Platform height maximum            | 12.32 m  | 40 ft 5 in | 12.32 m     | 40 ft 5 in |
| Horizontal reach maximum           | 6.91 m   | 22 ft 8 in | 6.91 m      | 22 ft 8 in |
| Up and over clearance maximum      | 6.48 m   | 21 ft 3 in | 6.48 m      | 21 ft 3 in |
| <b>A</b> Platform length           | 0.76 m   | 2 ft 6 in  | 0.76 m      | 2 ft 6 in  |
| <b>B</b> Platform width            | 1.42 m   | 4 ft 8 in  | 1.17 m      | 3 ft 10 in |
| <b>C</b> Height - stowed           | 1.98 m   | 6 ft 6 in  | 1.98 m      | 6 ft 6 in  |
| <b>D</b> Length - stowed           | 6.53 m   | 21 ft 5 in | 6.53 m      | 21 ft 5 in |
| <b>E</b> Width                     | 1.50 m   | 4 ft 11 in | 1.50 m      | 4 ft 11 in |
| <b>F</b> Wheelbase                 | 1.96 m   | 6 ft 5 in  | 1.96 m      | 6 ft 5 in  |
| <b>G</b> Ground clearance - center | 24.1 cm  | 9.5 in     | 24.1 cm     | 9.5 in     |

### Productivity

|                          |                      |               |                      |               |
|--------------------------|----------------------|---------------|----------------------|---------------|
| Lift capacity            | 227 kg               | 500 lbs       | 227 kg               | 500 lbs       |
| Platform rotation        | 180°                 | 180°          | 180°                 | 180°          |
| Vertical jib rotation    | 128°                 | 128°          | 128°                 | 128°          |
| Horizontal jib rotation  | —                    | —             | 180°                 | 180°          |
| Turntable rotation       | 355° non-continuous  |               | 355° non-continuous  |               |
| Turntable tailswing      | 0.13 m               | 5 in          | 0.13 m               | 5 in          |
| Drive speed - stowed     | 7.2 km/h             | 4.5 mph       | 7.2 km/h             | 4.5 mph       |
| Drive speed - raised**   | 1.1 km/h             | 0.68 mph      | 1.1 km/h             | 0.68 mph      |
| Gradeability - stowed*** | 30%                  | 30%           | 30%                  | 30%           |
| Turning radius - inside  | 0.87 m               | 2 ft 11 in    | 0.87 m               | 2 ft 11 in    |
| Turning radius - outside | 3.20 m               | 10 ft 6 in    | 3.20 m               | 10 ft 6 in    |
| Controls                 | 24 V DC proportional |               | 24 V DC proportional |               |
| Tyres - front            | 56x18x45 cm          | 22x7x17.75 in | 56x18x45 cm          | 22x7x17.75 in |
| Tyres - rear             | 64x18 cm             | 25.6 x 7 in   | 64x18 cm             | 25.6 x 7 in   |

### Power

|                         |                               |         |                               |         |
|-------------------------|-------------------------------|---------|-------------------------------|---------|
| Power source            | 48 V DC (eight 6 V batteries) |         | 48 V DC (eight 6 V batteries) |         |
|                         | 350 Ah capacity               |         | 350 Ah capacity               |         |
| Drive system            | 29 V 3 phase AC               |         | 29 V 3 phase AC               |         |
| Auxiliary power unit    | 24 V DC                       | 24 V DC | 24 V DC                       | 24 V DC |
| Hydraulic tank capacity | 30.3 L                        | 8 gal   | 30.3 L                        | 8 gal   |

### Sound & Vibration Levels

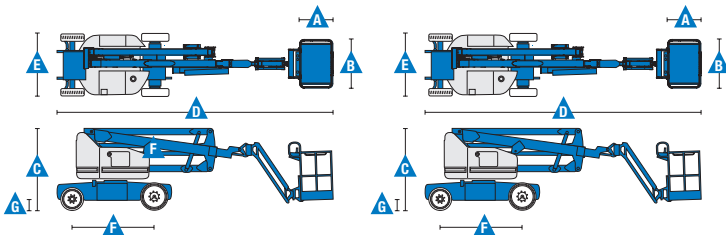
|                                 |                       |                           |                       |                           |
|---------------------------------|-----------------------|---------------------------|-----------------------|---------------------------|
| Sound pressure level (ground)   | <70 dBA               | <70 dBA                   | <70 dBA               | <70 dBA                   |
| Sound pressure level (platform) | <70 dBA               | <70 dBA                   | <70 dBA               | <70 dBA                   |
| Vibration                       | <2.5 m/s <sup>2</sup> | <8 ft 2 in/s <sup>2</sup> | <2.5 m/s <sup>2</sup> | <8 ft 2 in/s <sup>2</sup> |

### Weight\*\*\*\*

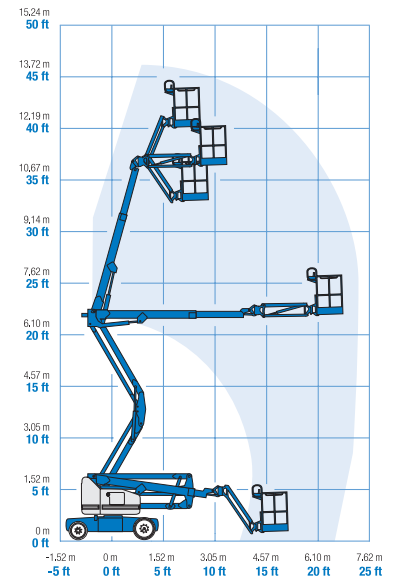
|  |          |            |          |            |
|--|----------|------------|----------|------------|
|  | 6,908 kg | 15,230 lbs | 6,940 kg | 15,300 lbs |
|--|----------|------------|----------|------------|

### Standards Compliance

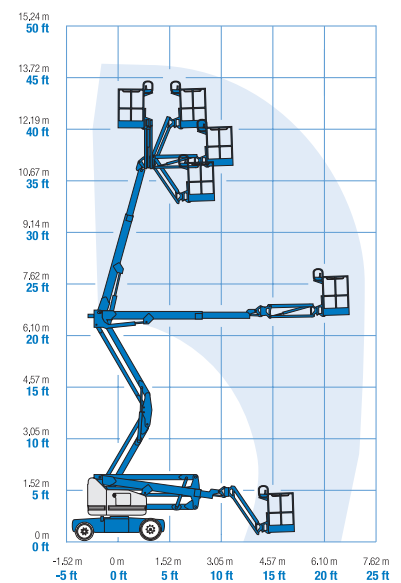
EU Directives: 2006/42/EC - Machinery (harmonized standard EN280); 2004/108/EC (EMC); 2006/95/EC (LVD)



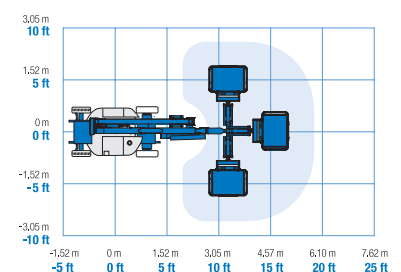
### Range Of Motion Z-40/23N



### Range Of Motion Z-40/23N RJ



### Jib Range Of Motion Z-40/23N RJ



\* The metric equivalent of working height adds 2 m to platform height. U.S. adds 6 ft to platform height.  
 \*\* In lift mode \*(platform raised), the machine is designed to operated on firm, level surfaces only.  
 \*\*\* Gradeability applies to driving on slopes. See operator's manual for details regarding slope ratings.  
 \*\*\*\* Weight will vary depending on options and/or country standards.

### Features

| Standard Features | Easily Configured To Meet Your Needs | Options & Accessories |
|-------------------|--------------------------------------|-----------------------|
|-------------------|--------------------------------------|-----------------------|

#### Measurements

##### Z-40/23N & Z-40/23N RJ

- 14.32 m (46 ft 5 in) working height
- 6.91 m (22 ft 8 in) horizontal reach
- 6.48 m (21 ft 3 in) up and over clearance
- Up to 227 kg (500 lbs) lift capacity

#### Productivity

- 1.50 m (4 ft 11 in) width
- 0.87 m (2 ft 11 in) inside turning radius
- 1.22 m (4 ft) jib boom with 128° working range
- Self-leveling platform
- Hydraulic platform rotation
- Proportional joystick controls
- Telematics-Ready Connector
- Thumb rocker steer
- Drive enable
- Chassis tilt drive function cut-out
- AC power cord to platform
- Horn
- Hour meter
- Tilt alarm
- Descent & travel alarms
- Flashing beacon
- Hydraulic filter condition monitor
- 355° non-continuous turntable rotation
- Variable speed high efficiency hydraulic power unit
- AC electric drive system
- Traction control
- On board easy to understand diagnostics
- Zero tailswing
- Dual parallelogram for vertical wall tracking
- Lift Guard™ Contact Alarm

#### Power

- 48 V DC deep cycle battery pack
- 24 V DC auxiliary power
- Universal 30A battery smart charger
- Battery charge indicator
- Low battery voltage interrupt

#### Platform Options

- Steel 1.17 m (3 ft 10 in) (standard)
- Steel 1.42 m (4ft 8 in) (Optional, not available with rotating jib - RJ model)

#### Jib Options

- Articulating 1.22 m (4 ft) jib boom
- 1.22 m (4 ft) horizontal rotating jib boom

#### Power

- 48 V DC (eight 6 V 350 Ah batteries)

#### Drive

- 2 x 4 Electric AC

#### Tyres

- Solid rubber non-marking

#### Productivity

- Airline to platform
- Platform auxiliary top rail
- Power to platform: plug, socket, with optional Residual-current Circuit Breaker with Overcurrent protection
- Work lights package (2 on chassis, 2 on platform)
- Hostile environment kit<sup>(1)</sup>: cylinder bellow, boom wiper seals and platform control box cover
- Biodegradable hydraulic oil
- Track & Trace<sup>(2)</sup> (GPS unit providing machine location & operating information)
- Chassis tilt lift function cut-out (software setting)
- Lockable platform control box cover
- Tool tray<sup>(3)</sup>

#### Power

- AGM Maintenance-free batteries<sup>(1)</sup>



<sup>(1)</sup> Factory-fit option only  
<sup>(2)</sup> Includes a first 2 years subscription  
<sup>(3)</sup> Aftermarket only

### Europe, Middle East, Africa and Russia Region

United Kingdom and Europe, T: +44 800 988 3739 (toll free) or +31 165 519 349

Middle East, Southern Africa, Russia and Turkey, T: +971 4 399 0381

Visit [www.genielift.com/en-gb/about-genie/locations](http://www.genielift.com/en-gb/about-genie/locations) to view our global locations list

### Worldwide Manufacturing And Distribution

Australia · Brazil · Caribbean · Central America · China · France · Germany · Italy · Japan · Korea · Mexico · Russia · Southeast Asia · Spain · Sweden · United Arab Emirates · United Kingdom · United States

Product specifications and prices are subject to change without notice or obligation. The photographs and/or drawings in this document are for illustrative purposes only. Refer to the appropriate Operator's Manual for instructions on the proper use of this equipment. Failure to follow the appropriate Operator's Manual when using our equipment or to otherwise act irresponsibly may result in serious injury or death. The only warranty applicable to our equipment is the standard written warranty applicable to the particular product and sale and we make no other warranty, express or implied. Products and services listed may be trademarks, service marks or trade names of Terex Corporation and/or their subsidiaries in the USA and many other countries. Genie is a registered trademark of Terex South Dakota, Inc. © 2020 Terex Corporation.

