



A TEREX BRAND

Self-Propelled Telescopic Booms

S™ -60HC "HIGH CAPACITY"

Specifications

Model	S-60HC	
Measurements	Metric	US
Working height maximum*	19.79 m	64 ft 4 in
Platform height maximum	17.79 m	58 ft 4 in
Horizontal reach maximum in 340 kg (750 lb) maximum outreach zone	15.50 m	50 ft 10 in
Horizontal reach maximum in 567 kg (1,250 lb) maximum capacity zone	11.87 m	38 ft 11 in
Below ground reach	1.70 m	5 ft 7 in
▲ Platform length - 8 ft model	0.91 m	3 ft
▲ Platform length - 6 ft model	0.76 m	2 ft 6 in
▲ Platform width - 8 ft model	2.44 m	8 ft
▲ Platform width - 6 ft model	1.83 m	6 ft
▲ Height - stowed	2.72 m	8 ft 11 in
▲ Length - stowed	8.46 m	27 ft 9 in
▲ Width	2.49 m	8 ft 2 in
▲ Wheelbase	2.50 m	8 ft 2.5 in
▲ Ground clearance - center	0.37 m	1 ft 2.5 in

Productivity

Lift capacity - maximum outreach zone	340 kg	750 lbs
Lift capacity - maximum capacity zone	567 kg	1,250 lbs
Platform rotation	160°	160°
Turntable rotation	360° continuous	
Turntable tailswing	1.22 m	4 ft
Drive speed - 2WD stowed	6.4 km/h	4.0 mph
Drive speed - 4WD stowed	4.8 km/h	3.0 mph
Drive speed - raised or extended	30 cm/s	1 ft/s
Gradeability - 2WD stowed**	30%	30%
Gradeability - 4WD stowed**	45%	45%
Turning radius - inside	2.36 m	7 ft 9 in
Turning radius - outside	5.54 m	18 ft 2 in
Controls	12 V DC proportional	
Tyres - RT Lug	355/55D 625	

Power

Power source	Deutz D-2011 L03i 3 cylinder diesel 48 hp (36 kW) Perkins 404D-22 4 cylinder diesel 51 hp (38 kW) Deutz TD2011 L04i 4 cylinder turbo diesel 74 hp (55 kW)	
Auxiliary power unit	12 V DC	12 V DC
Hydraulic tank capacity	170 L	45 gal
Fuel tank capacity (Diesel)	132 L	35 gal

Sound & Vibration Levels

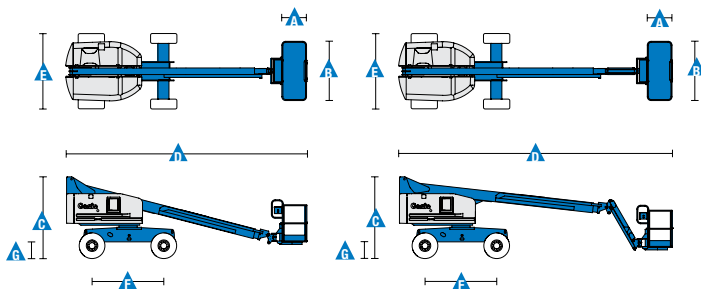
Sound pressure level (ground workstation)	84 dBA	84 dBA
Sound pressure level (platform workstation)	79 dBA	79 dBA
Vibration	<2.5 m/s ²	<8 ft 2 in/s ²

Weight***

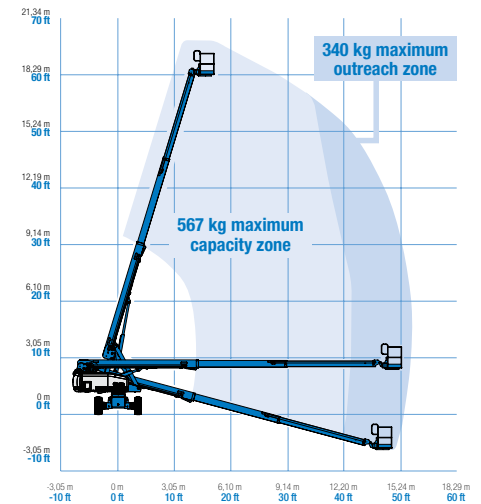
2WD	9,996 kg	22,038 lbs
4WD	10,073 kg	22,208 lbs
CE Foam Filled tyres	add 347 kg	add 764 lbs

Standards Compliance

EU Directives: 2006/42/EC - Machinery (harmonized standard EN280:2001+A2:2009); 2004/108/EC (EMC); 2000/14/EC (Outdoor Noise)



Range of Motion S-60HC



* The metric equivalent of working height adds 2 m to platform height. U.S. adds 6 ft to platform height.

** Gradeability applies to driving on slopes. See operator's manual for details regarding slope ratings.

*** Weight will vary depending on options and/or country standards.

HireSafe SOLUTIONS

HONEST, RELIABLE & REACTIVE SOLUTIONS FOR WORKING AT HEIGHT

CONTACT US

0800 865 4455

info@hiresafesolutions.com

www.hiresafesolutions.com



Self-Propelled Telescopic Booms

S™ -60HC “HIGH CAPACITY”

Features

Standard Features	Easily Configured To Meet Your Needs	Options & Accessories
<p>Measurements</p> <p>S-60HC</p> <ul style="list-style-type: none"> • 19.79 m (64 ft 4 in) working height • 15.50 m (50 ft 10 in) maximum horizontal reach with 340 kg (750 lb) load • 11.87 m (38 ft 11 in) maximum horizontal reach with 567 kg (1,250 lb) load • 340 kg (750 lb) platform load in maximum outreach zone • 567 kg (1,250 lb) platform load in maximum capacity zone <p>Productivity</p> <ul style="list-style-type: none"> • Self-levelling platform • Hydraulic platform rotation • Half-mesh platform inserts with swing gate ⁽¹⁾ • Fully proportional Hall effect joystick controls • Thumb rocket steering • Drive enable • AC power cord to platform • Tilt alarm • Descent & travel alarms • Flashing beacon • Horn • Hour meter • 360° continuous turntable rotation • Locking turntable covers • Positive traction drive • Two speed wheel motors • Certified load sensor <p>Power</p> <ul style="list-style-type: none"> • 12 V DC auxiliary power • Anti-restart engine protection • Auto engine fault shutdown • Intake air heater (Deutz engine) 	<p>Platform Options</p> <ul style="list-style-type: none"> • Steel 2.44 m (8 ft) (standard) • Steel 1.83 m (6 ft) • Steel 2.44 m (8 ft) tri-entry <p>Engine Options</p> <ul style="list-style-type: none"> • Deutz diesel 36 kW (48 hp) • Perkins diesel 38 kW (51 hp) • Deutz turbo diesel 55 kW (74 hp) <p>Drive Options</p> <ul style="list-style-type: none"> • 2 x 4 • 4 x 4 <p>Axle Options</p> <ul style="list-style-type: none"> • Active oscillation • Non-oscillating <p>Tyre Options</p> <ul style="list-style-type: none"> • Rough terrain air-filled (standard) • Rough terrain foam-filled • Rough terrain non-marking air or foam-filled • Sealant treated air-filled 	<p>Productivity Options</p> <ul style="list-style-type: none"> • Platform swing gate ⁽¹⁾ • Half mesh platform inserts with swing gate ⁽¹⁾ • Platform top auxiliary rail • Weld leads to platform ⁽²⁾ • Air line to platform • Power to platform (incl. plug, socket and ground fault interrupt leakage on request) • Work lights package (2 on chassis, 2 on platform) • Dual axis joystick steering • Second battery • Hydraulic oil cooler • Biodegradable hydraulic oil ⁽²⁾ • Hostile environment kit ⁽²⁾: cylinder bellows, boom wiper seals, platform and ground control box cover • Deluxe hostile environment kit ^(2,3): adds to basic kit center turntable shield, ring gear guard, tail pipe guard, engine cover flaps and air pre-cleaner • Tilt cut-out option • Track & Trace ⁽⁴⁾ (GPS unit providing machine location & operating information) • Panel cradle package ^(2,3) • Lockable platform control box covers • Tow package ⁽²⁾ • Tool tray <p>Power Options</p> <ul style="list-style-type: none"> • Engine gauge package ⁽²⁾: oil pressure, temp & amp • AC generator packages (110V/60Hz - 220V/50Hz, 3000 W) ⁽²⁾ • Hydraulic MTE generator kit (110V/120V-220V/240V) • Deutz V-belt generator kit (110V/220V) ⁽³⁾ • Diesel air intake pre-cleaner ^(2,3) • Diesel catalytic scrubber muffler ⁽²⁾ • Low temperature cut-out module • Engine heater ⁽³⁾ • Refinery kit with spark arrestor and electric or mechanical Chalwyn valve ⁽³⁾



⁽¹⁾ Not available on tri-entry platforms
⁽²⁾ Factory-fit option only
⁽³⁾ Available on selected models only. See your Genie representative for further information.
⁽⁴⁾ Includes a first 2 years subscription

