

DINO[®] 260XTD



DINO Lift[®]

Get Lifted[™]

XT-SERIES

DINO[®] 260XTD



Operation of all movements from the cage
 – all driving, outrigger and boom functions can be done from well defined control panel in the cage.



Strong articulated boom featuring long outreach
 – unique “up and over” capability provides easy access over obstacles .

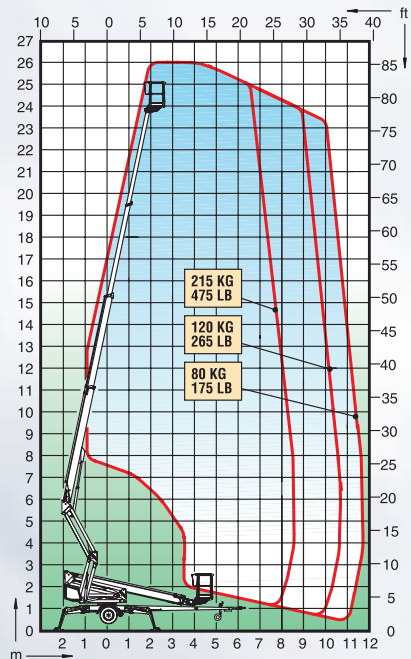


Stable spider type outriggers
 – the platform can be levelled to horizontal even on rough and inclined ground.



Diversified and safe steering possibilities
 – driving system and stabiliser controls duplicated on the chassis. Remote driving system via cable also supplied.

Technical specification



Max. working height	26.0 m	85'5"
Max. platform height	24.0 m	78'10"
Max. outreach	11.7 m	38'5"
Support width	4.4 m	14'5"
Lifting capacity	215 kg	475 lb
Basket size	0.7x1.3m	2'4" x 4'3"
Boom rotation	cont.	cont.
Basket rotation	90°	90°
Boom control	proport.	proport.
Transport length	8.11 m	26'7"
Transport width	2.05 m	6'9"
Transport height	2.43 m	8'
Weight	3495 kg	7703 lb
Driving system	std	std
AC-socket in the basket	std	std
Electro motor	std	std
Petrol power pack	std	std
Diesel power pack	opt.	opt.
Gradeability	25%	25%
Drive from the cage	std	std

The specification is subject to change without notice.

XT-series DINOs are strong and versatile trailer-mounted platforms.

Articulating boom with telescopic top section and proportional steering secure stable access to the most demanding work targets even over obstacles and in confined environment.

Thanks to the articulated boom, the basket can be moved three meters straight upwards.

Fir Tree Farm
 Warmington
 Banbury
 Oxfordshire
 OX17 1JL

Junction Lane
 Sankey Valley Ind Est
 Newton-Le-Willows
 Merseyside
 WA12 8DN

0800 865 4455
 info@hiresafesolutions.com
 @HireSafeSol
 facebook.com/hiresafesolutions

HireSafe
 SOLUTIONS