

SPECIFICATION ZED 20.2 H

TECHNICAL DATA

- Double pantograph + telescopic boom (main boom + one extension)
- Sigma boom movement enabled by connecting rods
- 640° turret rotation
- Proportional, electrohydraulic controls in basket and ground
- Engine start and stop controls from basket and ground
- Anti-slip, aluminium flatbed decking with tool tray walls
- Basket base in composite material with aluminium guardrails
- 65° right + 65° left hydraulic basket rotation
- Automatic hydraulically actioned basket levelling
- 4 hydraulic outriggers with ground pressure sensors
- Hydraulic system operated by vehicle's PTO
- Buzzer indicating PTO engaged
- Hour meter
- 230 V AC CE electrical socket in the basket
- Standard boom colours blue (RAL 5017) or white (RAL 9003)
- CE Certified

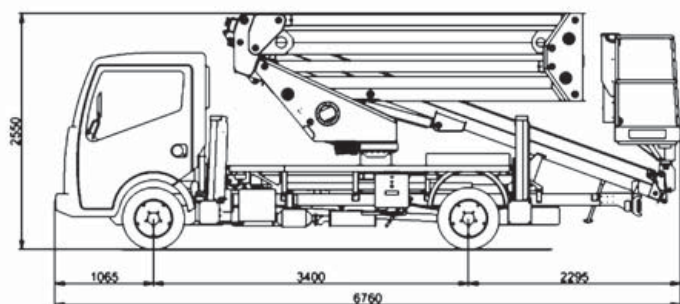
PERFORMANCE

| | |
|---------------------------|------------------|
| Working height | 20 m |
| Platform height | 18 m |
| Working outreach | 9,2 m |
| Capacity (2 people incl.) | 230 / 300 kg* |
| Basket dim. | 1400x700x1100 mm |
| GVW minimum | 3,5 t |

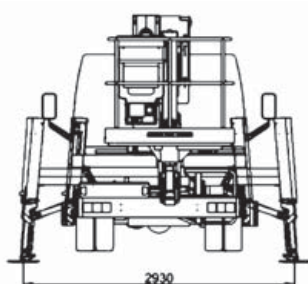
* With Load Cell. With VTR basket capacity 200/250 kg



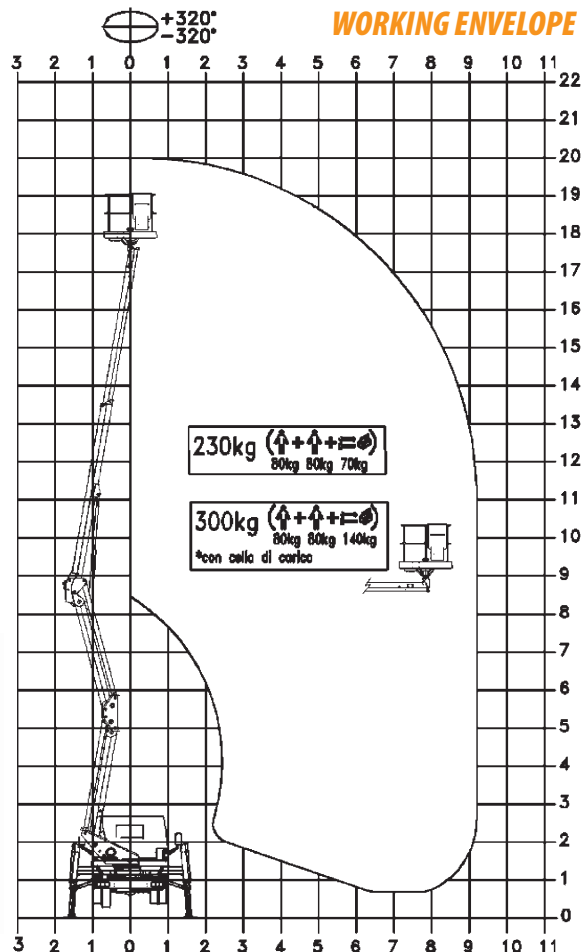
DIMENSIONS



OUTRIGGER FOOTPRINT



WORKING ENVELOPE



KEY POINTS



Product specifications are subject to change without notice or obligation. Technical features and drawings in this brochure are for illustrative purposes only. _ZED 20.2 H - ed. 10/12



HONEST, RELIABLE & REACTIVE
SOLUTIONS FOR WORKING AT HEIGHT



CONTACT US

0800 865 4455
info@hiresafesolutions.com
www.hiresafesolutions.com

